

Product Information

SLZ-M
600x600 4-Way Blow Ceiling Cassette System
Inverter Heat Pump

Making a
World of
Difference

Mr.SUM.



The **SLZ-M** cassette unit provides the smart solution to comfortable and efficient air conditioning. It combines a stylish square design slimline grille with the latest energy-saving technologies and is designed to fit snugly to ceilings making it ideal in both offices and retail.

Key Features

- New Design - Fits into narrow ceiling spaces with height of only 245mm
- Optional 3D i-see sensor grille provides customised comfort by automatically monitoring room occupancy, position and body temperatures
- Horizontal Airflow - eliminating uncomfortable draughts and improving airflow control



Air Conditioning

Product Information

SLZ-M
600x600 4-Way Blow Ceiling Cassette System
Inverter Heat Pump

Making a
World of
Difference



SLZ-M-FA INDOOR UNITS		SLZ-M15FA	SLZ-M25FA	SLZ-M35FA	SLZ-M50FA	SLZ-M60FA
CAPACITY (kW)	Heating (nominal)	1.7 (0.9-3.1)	3.2 (1.3-4.2)	4.0 (1.7-5.0)	5.0 (1.7-6.0)	6.4 (2.5-7.4)
	Cooling (nominal)	1.5 (0.9-2.4)	2.6 (1.5-3.2)	3.5 (1.4-3.9)	4.6 (2.3-5.2)	5.6 (2.3-6.5)
	Heating (UK)	-	2.69 (1.09-3.53)	3.36 (1.43-4.20)	4.20 (1.43-5.04)	5.38 (2.10-6.22)
	Cooling (UK)	-	2.60 (1.50-3.20)	3.46 (1.38-3.86)	4.56 (2.28-5.15)	5.55 (2.28-6.44)
SHF (nominal)	-	0.78	0.72	0.72	0.68	0.68
COP / EER (nominal)	-	3.61 / 3.8	3.61 / 3.60	3.61 / 3.60	3.21 / 3.30	2.81 / 3.17
SCOP / SEER (BS EN14825)	-	4.3 / 6.3	4.3 / 6.5	4.3 / 6.5	4.3 / 6.3	4.1 / 6.2
ERP ENERGY EFFICIENCY CLASS Heating/Cooling	-	A+ / A++	A+ / A++	A+ / A++	A+ / A++	A+ / A++
AIRFLOW (l/s)	Lo-Mi1-Mi2-Hi	100-108-117	108-125-142	108-133-158	117-150-192	125-192-217
PIPE SIZE mm (in)	Gas/Liquid	9.52 (3/8")	9.52 (3/8")	9.52 (3/8")	12.7 (1/2")	15.88 (5/8")
SOUND PRESSURE LEVEL (dBA)	Lo-Mi1-Mi2-Hi	6.35 (1/4")	6.35 (1/4")	6.35 (1/4")	6.35 (1/4")	6.35 (1/4")
SOUND POWER LEVEL (dBA)	-	24-26-28	25-28-31	25-30-33	27-34-39	32-40-43
DIMENSIONS (mm)	Width x Depth x Height (Grille)	45	48	51	56	60
WEIGHT (kg)	Unit / Panel	570 (650) x 570 (650) x 245 (10)	570 (650) x 570 (650) x 245 (10)	570 (650) x 570 (650) x 245 (10)	570 (650) x 570 (650) x 245 (10)	570 (650) x 570 (650) x 245 (10)
ELECTRICAL SUPPLY	-	15 / 3	15 / 3	15 / 3	15 / 3	15 / 3
FUSE RATING (BS88) - HRC (A)	-	Fed by Outdoor Unit	Fed by Outdoor Unit	Fed by Outdoor Unit	Fed by Outdoor Unit	Fed by Outdoor Unit
INTERCONNECTING CABLE No. Cores	-	6	6	6	6	6
GRILLE REFERENCE	-	4	4	4	4	4
WIRED REMOTE CONTROLLER REFERENCE	-	SLP-2FA	SLP-2FA	SLP-2FA	SLP-2FA	SLP-2FA
WIRELESS REMOTE CONTROLLER REFERENCE	-	PAR-33MAA	PAR-33MAA	PAR-33MAA	PAR-33MAA	PAR-33MAA

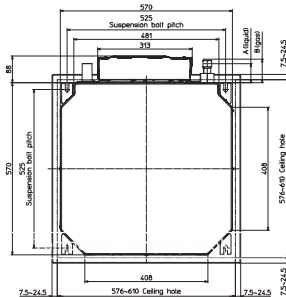
Note: SLZ-M15FA only available with R32 MXZ Multi-Split outdoor units.

SUZ-KA-VA6 OUTDOOR UNITS	N/A MULTI-SPLIT ONLY	SUZ-KA25VA6	SUZ-KA35VA6	SUZ-KA50VA6	SUZ-KA60VA6
SOUND PRESSURE LEVEL (dBA) Heating/Cooling	-	48 / 47	50 / 49	52 / 52	55 / 55
SOUND POWER LEVEL (dBA) Cooling	-	58	62	65	65
WEIGHT (kg)	-	30	35	54	50
DIMENSIONS (mm)	Width x Depth x Height	800 x 285 x 550	800 x 285 x 550	840 x 330 x 880	840 x 330 x 880
ELECTRICAL SUPPLY	-	220-240v, 50Hz	220-240v, 50Hz	220-240v, 50Hz	220-240v, 50Hz
PHASE	-	Single	Single	Single	Single
SYSTEM POWER INPUT (kW) Heating/Cooling (nominal)	-	0.89 / 0.68	1.11 / 0.97	1.56 / 1.39	2.28 / 1.77
Heating/Cooling (UK)	-	0.76 / 0.58	0.94 / 0.83	1.33 / 1.20	1.94 / 1.52
STARTING CURRENT (A)	-	4.2	5.1	7.0	10.1
SYSTEM RUNNING CURRENT (A) Heating/Cooling [MAX]	-	3.2 / 4.2 (7.2)	4.5 / 5.1 (8.7)	6.3 / 7.0 (12.3)	7.8 / 10.1 (14.4)
FUSE RATING (BS88) - HRC (A)	-	10	10	20	20
MAINS CABLE No. Cores	-	3	3	3	3
MAX PIPE LENGTH (m)	-	20	20	30	30
MAX HEIGHT DIFFERENCE (m)	-	12	12	30	30

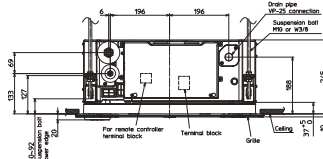
PRODUCT DIMENSIONS

SLZ-M15/25/35/50/60FA

Upper View



Side View



Front View

