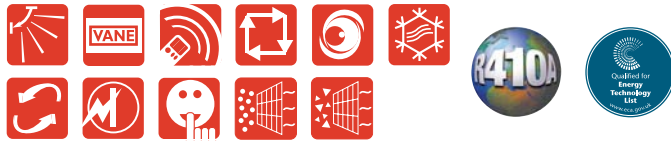


# MSZ-HC-VA(B) Inverter Heat Pump

## Classic Wall Mounted System

Mitsubishi Electric's new range of high specification, flat panel wall mounted models make use of inverter technology, whilst providing extremely good value for money, costing approximately 20% less than the MSZ-G equivalent.

These units have extremely quiet sound levels, whilst also delivering economical air conditioning, with improved COP/EER figures and in many cases corresponding 'A' rated energy labels.



\* Catechin filter is optional \* Air cleaning filter is optional

### Technical Information

#### MSZ-HC-VA(B) - INDOOR UNITS

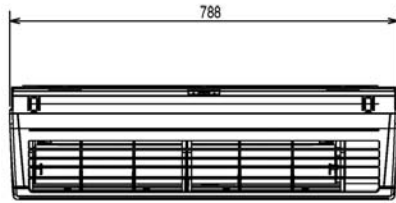
MODEL REFERENCE		MSZ-HC25VA	MSZ-HC35VAB
CAPACITY (kW)	Heating (nominal)	3.2 (0.9-4.4)	3.6 (0.9-4.8)
	Cooling (nominal)	2.5 (0.9-3.0)	3.4 (1.0-3.7)
	Heating (UK)	2.65 (0.75-3.65)	3.0 (0.75-4.0)
	Cooling (UK)	2.5 (0.9-3.0)	3.35 (1.0-3.65)
SHF (nominal)		0.79	0.76
COP / EER (nominal)		3.64 / 3.25	3.62 / 3.01
ENERGY LABEL	Heating/Cooling	A / A	A / B
AIRFLOW (m3/min)	Heating/Cooling - Lo-Mi-Hi-SupHi	5.1-6.5-7.8-9.1 / 5.3-7.0-8.7-10.5	4.9-6.7-8.0-9.2 / 5.2-6.8-8.4-10.2
PIPE SIZE mm(in)	Gas	9.52(3/8")	9.52(3/8")
	Liquid	6.35(1/4")	6.35(1/4")
NOISE (dBA)	Heating/Cooling - Lo-Mi-Hi-SupHi	26-32-38-43 / 26-32-38-43	26-32-38-43 / 26-32-38-43
DIMENSIONS (mm)	Width	788	788
	Depth	225	225
	Height	295	295
WEIGHT (kg)		9	9
ELECTRICAL SUPPLY		Fed by Outdoor Unit	Fed by Outdoor Unit
PHASE		Single	Single
RUNNING CURRENT (A)		0.22	0.22
FUSE RATING (BS88) - HRC (A)		6	6
INTERCONNECTING CABLE No. CORES		4	4

#### MUZ-HC-VA(B) - OUTDOOR UNITS

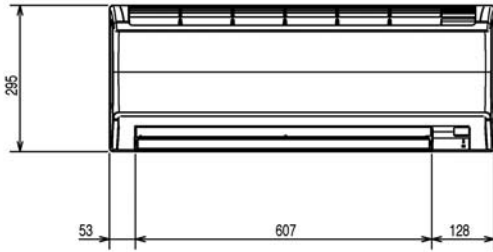
MODEL REFERENCE		MUZ-HC25VA	MUZ-HC35VAB
NOISE (dBA)	Heating/Cooling	47 / 46	48 / 47
WEIGHT (kg)		25	25
DIMENSIONS (mm)	Width	684	684
	Depth	255	255
	Height	540	540
ELECTRICAL SUPPLY		220-240v, 50Hz	220-240v, 50Hz
PHASE		Single	Single
SYSTEM POWER INPUT (kW)	Heating/Cooling (nominal)	0.88 / 0.77	0.995 / 1.13
	Heating/Cooling (UK)	0.801 / 0.616	0.905 / 0.904
STARTING CURRENT (A)		4.2	5.3
SYSTEM RUNNING CURRENT (A) [MAX] Heating/Cooling		4.2 / 3.7 [5.5]	4.8 / 5.3 [6.5]
FUSE RATING (BS88) - HRC (A)		16	16
MAINS CABLE No. CORES		3	3
MAX PIPE LENGTH (m)		10	10
MAX HEIGHT DIFFERENCE (m)		5	5
CHARGE R410A (kg) - 7m		0.73	0.75

### INDOOR UNIT MSZ-HC25/35VA(B)

Upper View >



Front View >



Side View >

